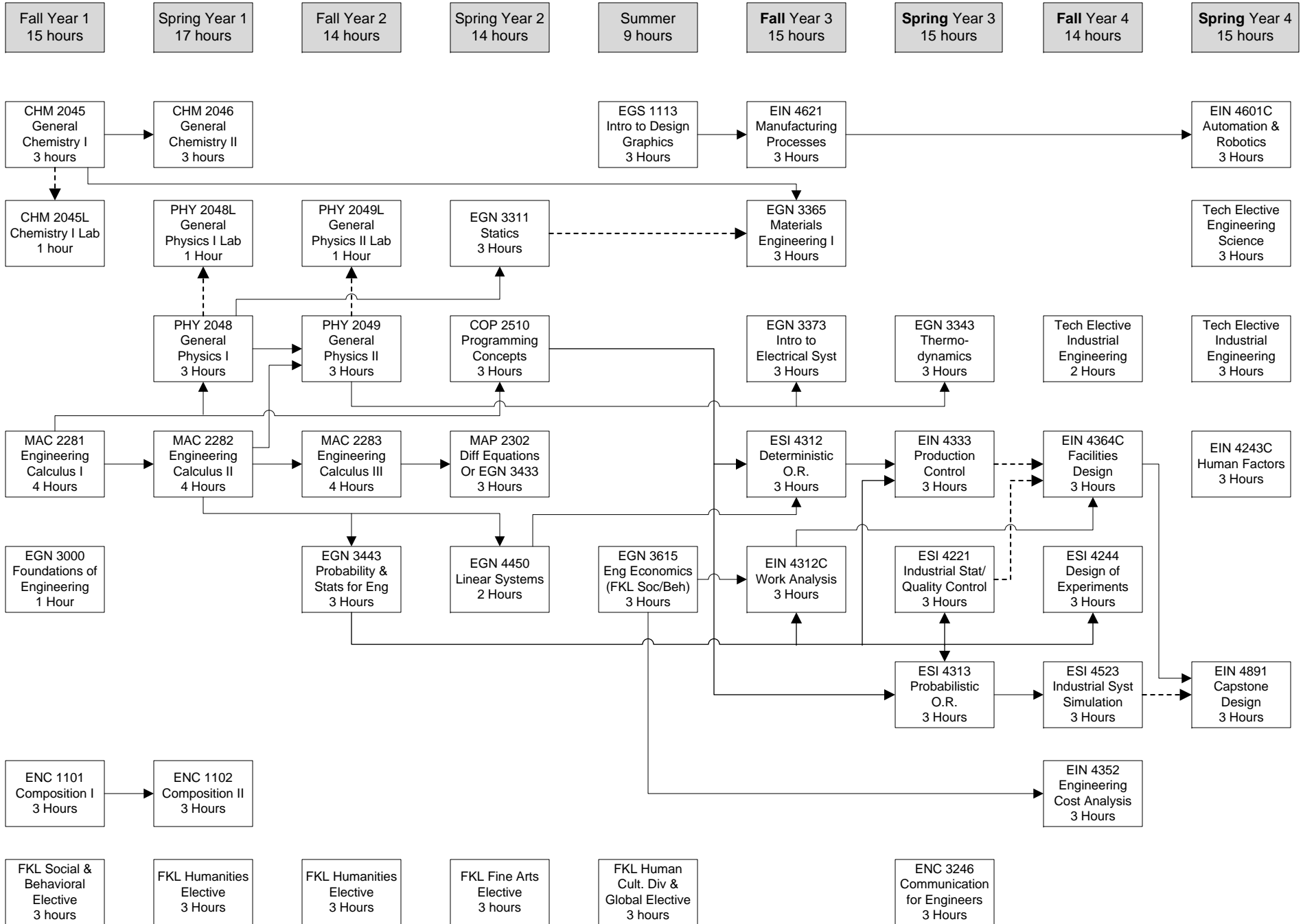


**NOTE: Industrial Engineering courses
"EIN" & "ESI" are offered once a year.**

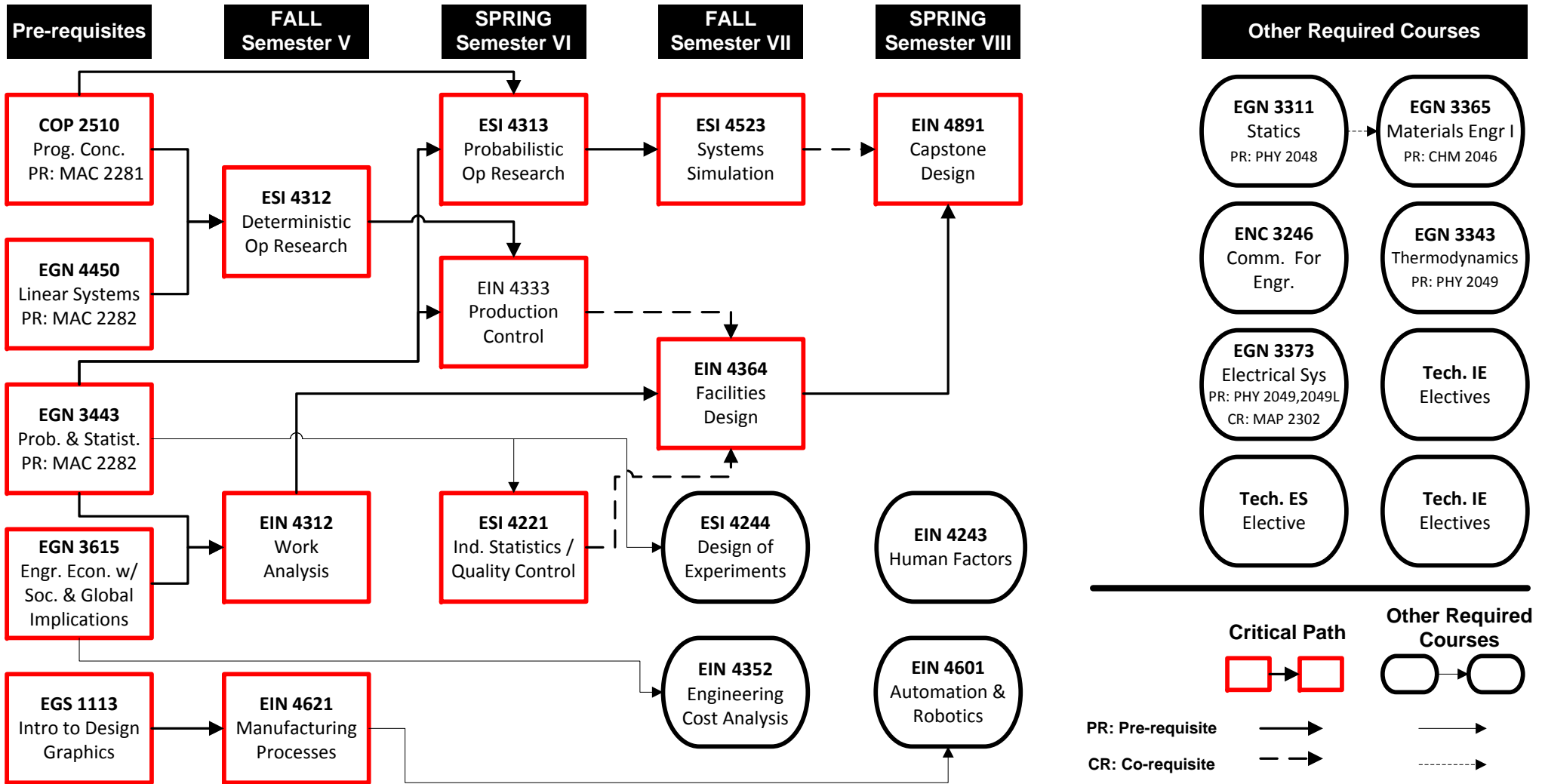
**USF Bachelor of Science in Industrial Engineering (B.S.I.E.)
Fall 2011 Catalog, 128 hours**



Pre-requisites Flowchart for BSIE Degree

Department of Industrial and Management Systems Engineering

Suggested course schedule. Revised: August 30, 2010



The Critical Path courses must be taken in the suggested semester to avoid delays.

Official communications use the UNA or Blackboard listed e-mail address. It is the student's responsibility to make sure they are receiving their Official USF Email.

For more information please visit <https://netid.usf.edu/una/>

By the College of Engineering Rule: Only grades of "C" or better will be accepted in all Math, Science and Engineering Courses.

Reminders:

BSIE required courses are only offered once a year. Students must be aware and comply with all Pre- & Co-requisites. Although this document summarizes degree requirements, the student is ultimately responsible for keeping updated and complying with all requirements for their degree as presented in the USF Undergraduate Catalog, the University's official student document. Industrial Engineering (IE) Tech Electives: Choose any course with the number EIN 4933. Engineering Science (ES) Tech Electives: Choose any College of Engineering course.

Exceptions: Courses that are already required or equivalent to a course required for your degree will NOT be accepted as a Tech Elective. - for example: *EGN 3433 Modeling and Analysis for Engineering* or *EGN 3538 Globalization and Technology*.

Programming language courses will NOT be accepted as Tech Electives. - for example: *C++* or *Java*. EGN 3021 History of Technology is NOT allowed. If you are doing research, you may take Special Topics (Independent Study) course in the IMSE Department.